



M O D E R N C R E T E . C O M



ModernCrete provides high quality decorative concrete finishes by utilizing innovative processes and employing the best artisans in the industry to develop lifelong relationships and cost-effective solutions to our customers.

ModernCrete is a nationwide full-service decorative concrete company specializing in diamond polished concrete.

Making concrete floors beautiful has been our passion since 2001. We use state-of-the-art techniques and tools for superior results. As you explore our photos, you will find it hard to believe these floors were once plain slabs of concrete.

Pride of workmanship and professionalism are hallmarks of our company and its employees. We accomplish this with a commitment to training. Our management team, project managers, and members of our crew attend seminars and workshops throughout the year.

Above all else, our customers take priority and are the reason we strive to provide quality products and service. This is what truly makes us stand out from other companies across the nation. We are committed to understanding your needs and making your vision a reality.

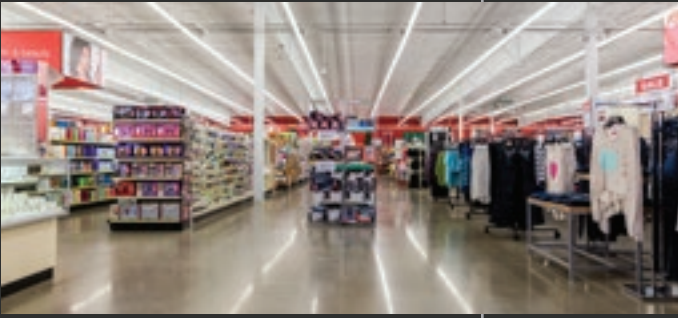
Services We Provide:

- Polished Concrete
- Concrete Overlays
- Penetrating Dyes
- Acid Stains
- High Performance Coatings, Epoxies, and Polyurethane
- Moisture Remediation
- Floor Leveling
- Coating Removal
- Surface Prep

CONCRETE POLISHING

Benefits of ModernCrete Polished Concrete:

- **ModernCrete PC** is 40% harder and more abrasion resistant than untreated concrete floors.
- **Cost-effective-** ModernCrete PC offers the lowest life cycle cost of any other flooring system.
- **Safe-** Wet or dry, ModernCrete PC meets or exceeds OSHA slip coefficient standards.
- **Beautiful-** ModernCrete PC creates a look often mistaken for marble or polished stone.
- **Tough-** Foot traffic, forklift tires, vehicles, pallets, etc. do not damage polished concrete.
- **Green-** ModernCrete PC is naturally sustainable and can contribute LEED points to any project.
- **Low Maintenance-** Polished Concrete requires no waxing and stripping to sustain its shine. Just sweep and mop!



BIG BOX RETAIL



SERVICE BAYS



REMODELS



WAREHOUSE



CHOOSE 1 OR MORE COLORS

CONCRETE POLISHING

ModernCrete Polished Concrete utilizes the existing concrete slab and applies a progressively finer series of diamond tooling to grind and polish the floor to the desired final finish. The process is completed with specialized equipment to capture the airborne dust. ModernCrete can customize your floor using color and designs ensuring each floor is unique to the facility to which its installed.

Nearly any concrete slab can be polished to meet the needs of your space, whether you're an industrial, commercial or retail location, business office, or community area.

Polished concrete has become the floor of choice for virtually any application. Schools, churches, museums, aircraft hangars, big box retailers, grocery stores, club stores, dealerships, warehouses and factories are examples of facilities with polished concrete.

ModernCrete has the expertise required to install polished concrete floors in all of these facilities and more. Our training and years of experience give us the ability to polish a new concrete slab or the third-generation use of an old concrete floor.



OFFICE



RESTAURANTS



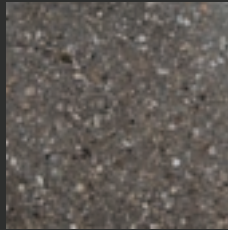
MANUFACTURING

FINISH OPTIONS

Aggregate Exposure



Cream Polish



Salt & Pepper - Light Aggregate



Medium -Heavy Aggregate

Gloss level

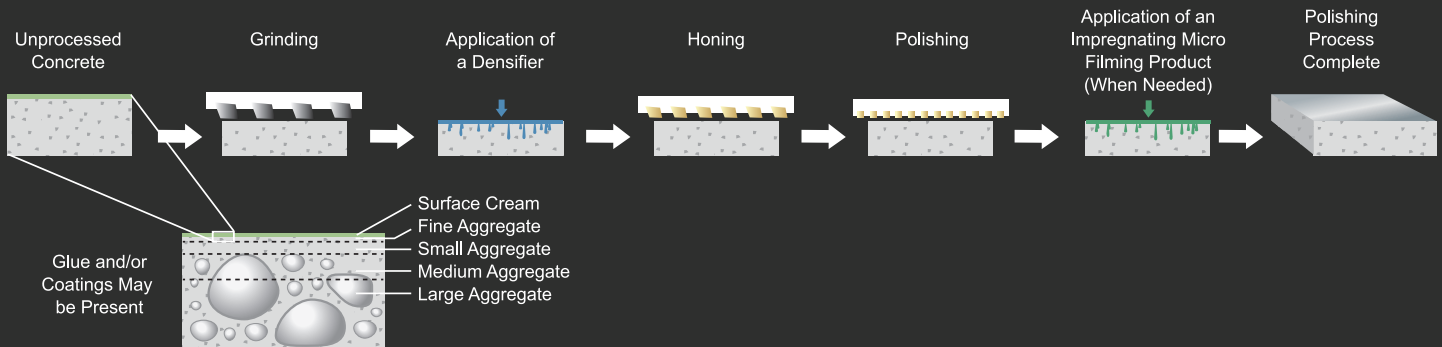
Level 1 Low Gloss - At a distance of 100 feet, the floor will reflect images from side lighting.

Level 2 Medium Gloss - At a distance of 30 to 50 feet, the floor will clearly reflect from side and overhead lighting.

Level 3 High Gloss - Looking straight down, the floor will clearly reflect overhead and side light, with the appearance of the floor looking wet.

Select Color, if any, from color chart

Process



Polished Concrete Lifecycle Chart

Flooring Option:	Installed Cost	Annual Maintenance Cost	Life Expectancy	10 Year Life Cost
Acid Stained Concrete	\$2.00 - \$6.00	\$1.75	5+ Years	\$21.50 - \$29.50
Ceramic Tile	\$5.00 - \$7.50	\$1.50	10+ Years	\$20.00 - \$22.50
Terrazzo	\$12.00 - \$18.00	\$0.70	10+ Years	\$19.00 - \$24.00
Carpet	\$1.00 - \$2.50	\$1.50	5+ Years	\$17.00 - \$20.00
Vinyl Tile (VCT)	\$1.50 - \$4.00	\$1.50	10+ Years	\$16.50 - \$19.00
Polished Concrete	\$1.75 - \$6.00	\$0.26	10+ Years	\$4.25 - \$8.50

CONCRETE OVERLAYS

Some floors are too badly damaged to restore. These floors are usually good candidates for our concrete overlays. Our interior overlays are generally installed using a light gray, self-leveling cement based material. It is formulated to provide us with a “new canvas” that is designed to accept diamond polishing, architectural stains, concrete coatings. Overlays can also be “seeded” with glass or aggregates to create a terrazzo-like finish.



SEEDD OVERLAY TO RESEMBLE TERRAZZO



OVERLAY IN PROCESS



STAIN AND SEAL



INTEGRAL COLOR POLISHED OVERLAY



WHITE POLISHED OVERLAY

EPOXY FLOORING



EPOXY FLOORING



OTHER SERVICES



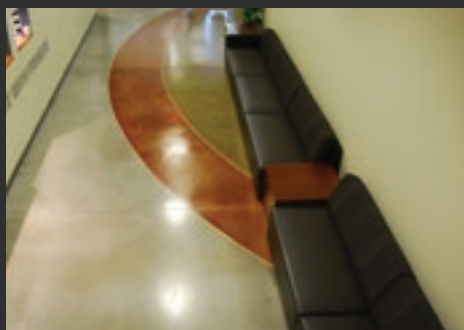
MOISTURE MITIGATION



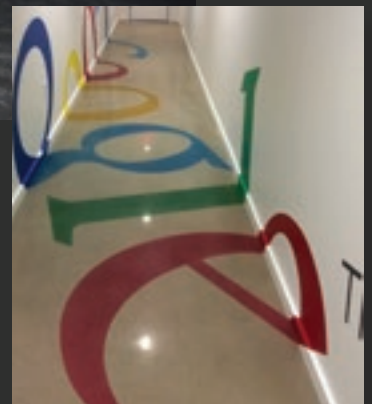
FLOOR LEVELING



COATING REMOVAL
& FLOOR PREP

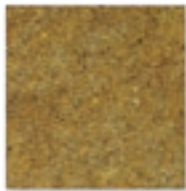


STAIN AND SEAL



CUSTOM DESIGN & LOGOS

DYE COLOR CHART



Gold



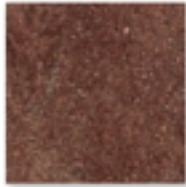
Raw Sienna



Caramel



Sand



Terra Cotta



Mahogany



Saddle Brown



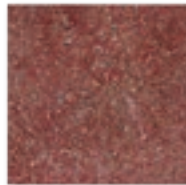
Chocolate Brown



Walnut



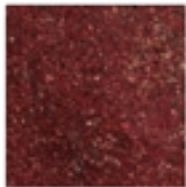
Burnt Sienna



Chestnut



Red



Maroon



Sepia



Eggplant



Turquoise



Slate



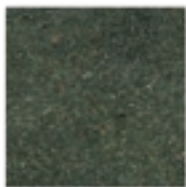
Patriot Blue



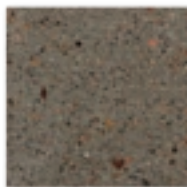
Green



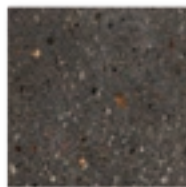
Pine Green



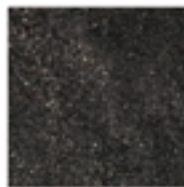
Forest Green



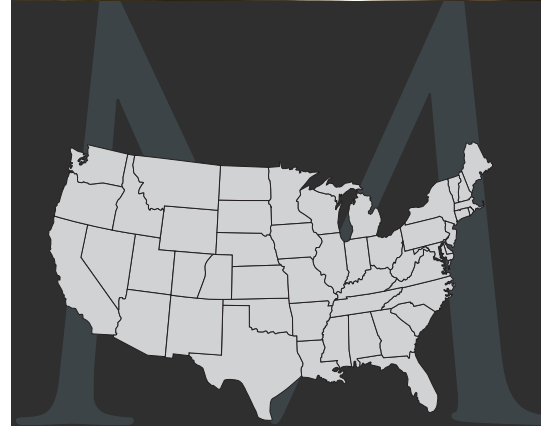
Gray



Black



Midnight Black



Nationwide Service

Corporate Headquarters

Central Office

2339 Kramer Ln.

Austin, TX 78758

Phone: 512-331-5555

Phone: 888-224-1786



888-224-1786

ModernCrete.com

